

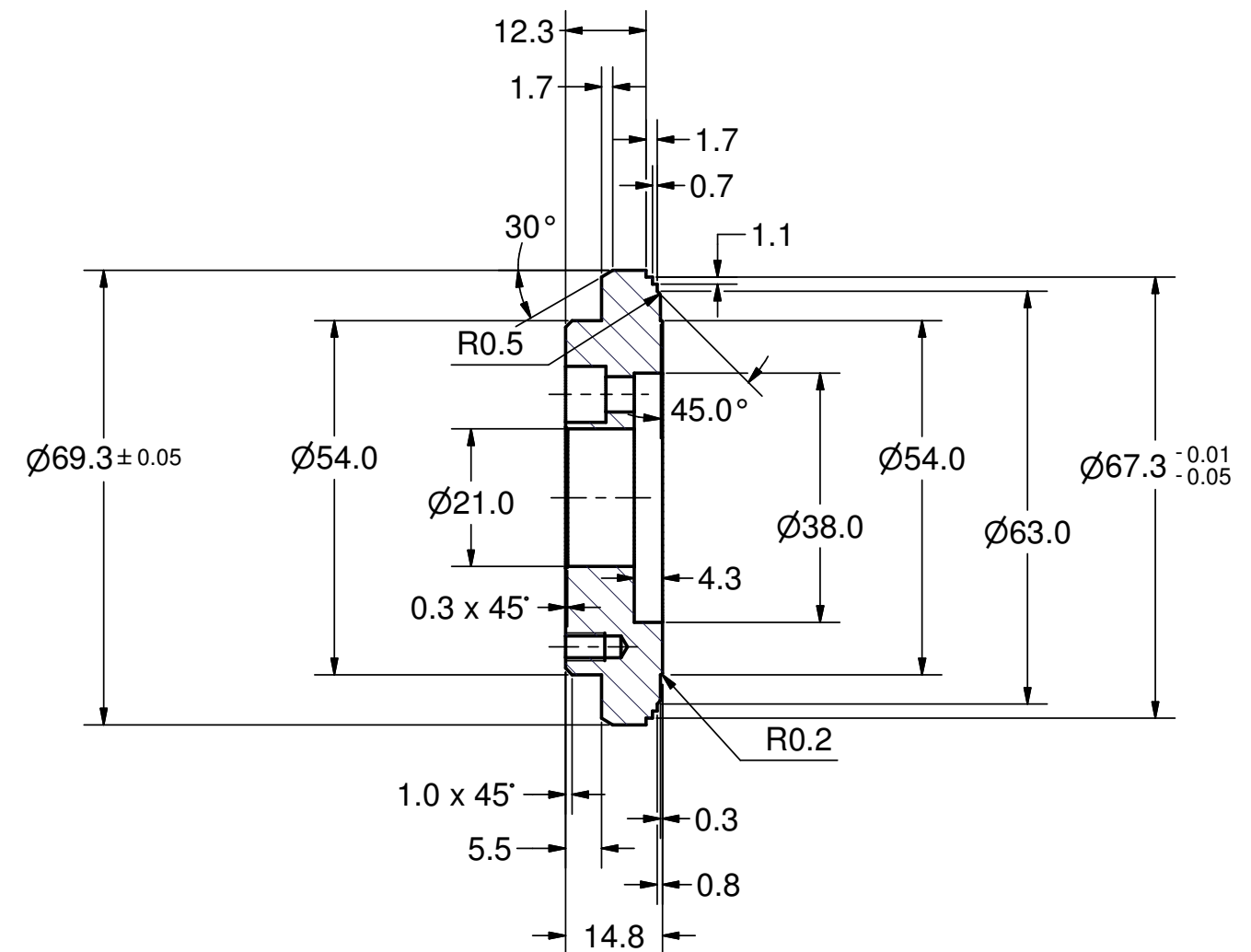
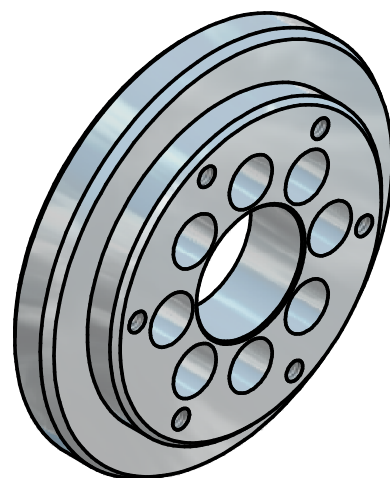
Ø3.5 - 8.5 DEEP
8-32 UNC - ∇ 6.0
6 HOLES

Ø45.5 ± 0.15

Ø31.5 ± 0.1

Ø5.4 THRU
Ø8.5 ∇ 6.2
8 HOLES

22.5°



A-A

Issued all design changes as Rev C (TIO) - 4/19/07 - SAB

				Rev. C	
				Scale : 1:1	mat: Stainless Steel, 316 LN
				ASSEMBLY : 75 kW CW Input Coupler	
				DESIGNATION :	
				CF FLANGE	
				100.125.001	
				1	
				A3	
State	Changes	Date	Name		